

CHARMILL

RESIDENTIAL



Lindfield Gardens, Hampstead NW3

£1,300

A modern three bedroom house in Lindfield Gardens, Hampstead. The house is arranged over two floors with the ground floor comprising an impressive 31 ft reception/dining room with wooden flooring leading to a private patio which opens out onto a stunning communal garden, separate fully fitted kitchen and guest cloakroom. The first floor boasts three double bedrooms (all with ample built-in storage) en-suite shower room off the principal bedroom and a family bathroom. The house further benefits from a double garage.

Lindfield Gardens is a tree-lined street located in the sought after residential area of Hampstead and just a short stroll away from its vast array of fashionable shops, restaurants and cafes. The house is superbly positioned for access to Hampstead station (Northern line) and Finchley Road station (Jubilee and Metropolitan line) which are both 0.5 miles away.

- Three bedrooms
- Two bathrooms
- Guest WC
- Double garage
- Communal garden
- House
- Private patio

Viewing

Please contact us on 020 7046 6276 if you wish to arrange a viewing appointment for this property or require further information.



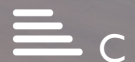
3



2

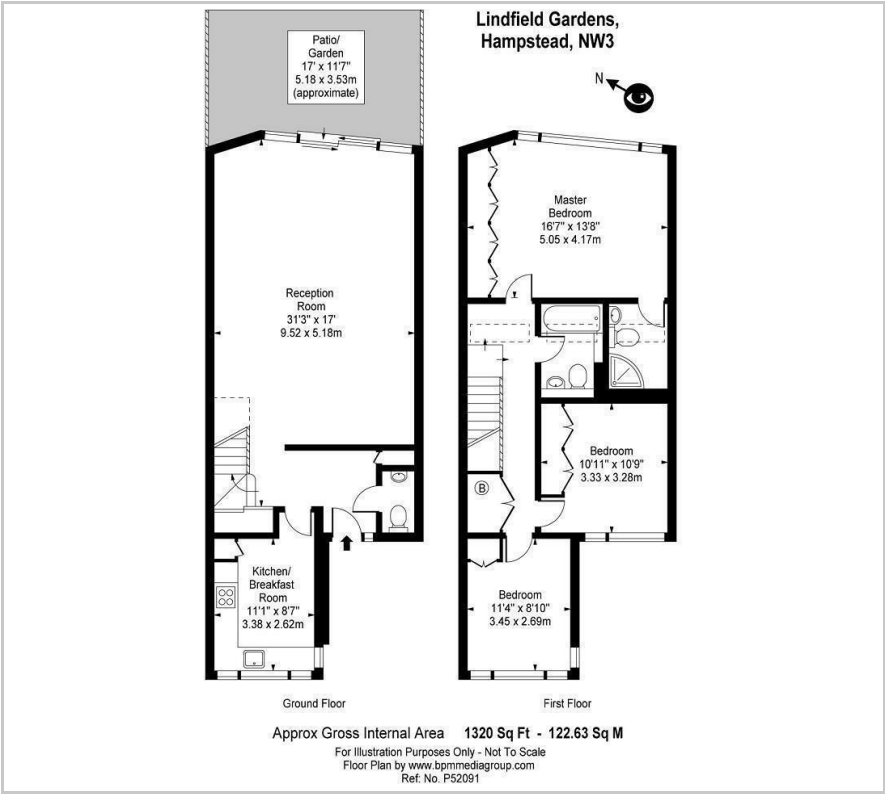


1

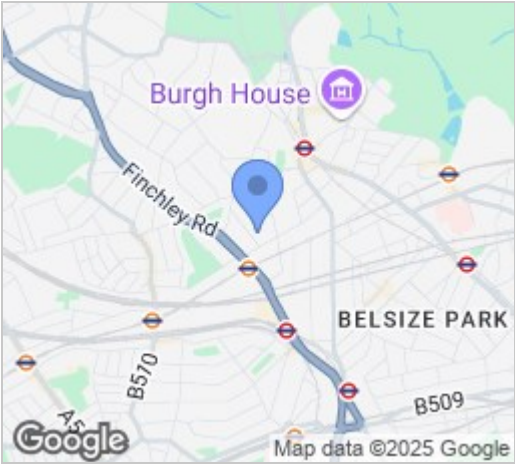


C

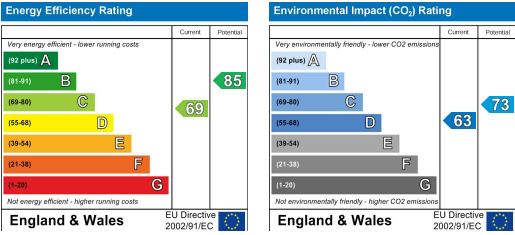
Floor Plan



Area Map



Energy Efficiency Graph



These particulars, whilst believed to be accurate are set out as a general outline only for guidance and do not constitute any part of an offer or contract. Intending purchasers should not rely on them as statements of representation of fact, but must satisfy themselves by inspection or otherwise as to their accuracy. No person in this firm's employment has the authority to make or give any representation or warranty in respect of the property.

020 7046 6276 • lettings@charmillresidential.co.uk • 51 Maida Vale, Little Venice, London W9 1SD
charmillresidential.co.uk